



## World Book Day :

We have enjoyed an absolutely fantastic week celebrating the year of Reading and World Book Day. The children have enjoyed: a trip to meet Dermot O Leary at his book launch of Toto, a visit to the theatre to watch *Swing in the Willows*, a Charlie and the Chocolate themed afternoon, a visit from the author Damien Harvey (including assembly and workshops) and finally they've enjoyed reading with you at 'Come and Read'. What a brilliant week! Look at our Instagram!



# Parents Evening - next week!



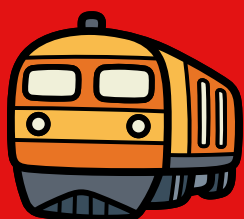
Tuesday 10<sup>th</sup> March 3:20-5:50

Wednesday 11<sup>th</sup> March 3:20-5:50

Check with your child's teacher if you have not received an appointment time.

Miss Hayes is running a free raffle. Pick up a ticket when you sign up to our Instagram for a chance to win a prize!

## Next week :



### Tue:

Train Safety Assembly 2:30-3

Y6 SATs meeting 3-3:15

Parents Evening 3:20-6pm

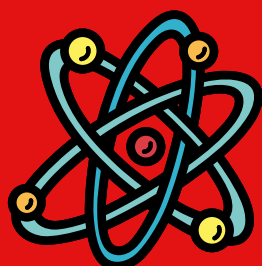


### Wednesday:

2-3pm Tots and Toddlers with Miss Hayes

3:15-4:15 Ready Steady Cook with Neo

3:20-6pm Parents Evening



### Friday:

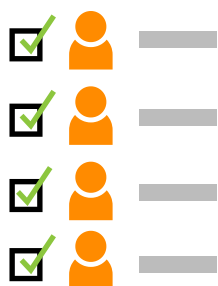
Parents invited to 'Science Activities' '2:30-3:10

## Attendance Matters

Every day counts because you count!

Attendance is vital for forming friendships, building confidence, and mastering basic skills that get harder to learn later. Regular routines reduce anxiety, ensuring children feel secure and ready to learn, while preventing learning gaps.

### ATTENDANCE





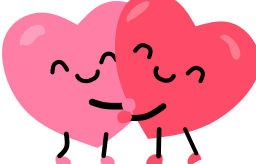


# Spring Dates

| Spring Term 2               |   |
|-----------------------------|---|
| <b>Monday 23rd February</b> | Back to school  |
| <b>Tuesday 3rd March</b>    | Y1 History Immersion Day (in school)<br>Y2 Charlie and the Chocolate Afternoon (in school)<br>Y5 and Y6 Floral Pavillion - Swing in the Willows (pm)<br>Y3 and Y4 BHSA - Dermot O'Leary book event (pm)                         |
| <b>Thursday 5th March</b>   | World Book Day (Character dress up and author visit)  |
| <b>Friday 6th March</b>     | 2.45pm Stay and Read (parents invited)  |
| <b>Friday 6th March</b>     | Surprise mystery visitor on the gate!<br>Community cuppa 1-2pm at the Well Lane shops   |
| <b>Monday 9th March</b>     | Science Week  |
| <b>Tuesday 10th March</b>   | Y6 Train Safety Assembly<br>Parents Evening 3:30-5:30   |
| <b>Wednesday 11th March</b> | Parents Evening 3:30-5:30   |
| <b>Thursday 12th March</b>  | Y6 Bake sale (fundraising for residential)  |
| <b>Friday 13th March</b>    | 'Come and See' Science Activities for parents   |
| <b>Tuesday 17th March</b>   | Y5 Urenco Science Workshop  |
| <b>Thursday 19th March</b>  | Red Nose Day (own clothes, £1 suggested donation to Comic Relief)<br>Y5 Charity Event - Talent Show   |
| <b>Friday 20th March</b>    | Y5 trip to Philharmonic and Y2 trip to West Kirby   |
| <b>Tuesday 24th March</b>   | Rock steady easter concert 9.15   |
| <b>Thursday 26th March</b>  | Choir of the year -(9.30 children) Liverpool Lighthouse- show starting at 12:30.<br>(Parents and carers will be invited)<br>Decorate an egg competition deadline<br>Life Church Easter Celebration assembly and raffle 2:30-3pm |
| <b>Friday 27th March</b>    | Celebration Assembly , Easter raffle, Egg winners<br>Easter Party, scavenger hunt (own clothes, party games, Easter film)<br>Finish for Easter 1:15pm   |

# The Heart Events



| Day and time                 | Theme   | Group   |
|------------------------------|---|---|
| Every Wednesday<br>2-3pm     |   | <b>Parent and Toddler group</b><br>A group for our parents and their babies and toddlers (0-4 yrs) run by our very own Miss Hayes. Play, sing, snack, stories and meet new friends! |
| Every Wednesday<br>3:15-4:15 |  | <b>Ready Steady Cook</b><br>Neo is here to run a 5 week family cooking class. Free for up to 8 families. Ask on the gate/office   |
| Every Friday<br>9-10am       |  | <b>Heart to Heart- Community cafe</b><br>Come and have a cuppa, a panini and a chat with Mrs Ormond. Community shop; pay as you feel.   |



# HEART HEART

Come along for a heart2heart chat every  
Friday 9-10am with Mrs Ormond.  
Our community cafe is now open!

