

## New Parent Local Academy

### Councillors

We are pleased to announce that we have appointed two additional parent Local Academy Councillors (previously know as School Governors): Lucy Scotton (Reception child's mum) and Holly Strong-Watson (Y2 child's mum). We are sure they will be a fantastic asset to our school and will help us move from strength to strength.



## 100% Attendance Award

Next term we will be awarding pupils who get 100% for the whole term. There will be an extra special award for those pupils who have managed 100% all year!

If your child has a cough or a cold, please give them calpol (or similar) and we can top them up at lunch time with your permission. We will always ring you if they deteriorate. We have a fantastic term planned with lots of trips, special days and an outstanding curriculum offer. Don't miss out! Every day counts!

## Fundraising

A huge thank you to your generous donations for Comic Relief. We raised a whopping £96.45

Mrs Ormond is selling tickets for the Easter raffle. Catch her on the gate to buy a stip for £1.



## Next week :

Mon: Bring in your decorated boiled egg

Tue: Rock Steady Concert 9:15

Wednesday:

2-3pm Tots and Toddlers with Miss Hayes

3:15-4:15 Ready Steady Cook with Neo

Easter egg competition winners announced

Thursday:

Life Church Easter Assembly

Lighthouse Choir Event

Friday: Easter Extravaganza- own clothes, crafts, scavenger hunt, Easter raffle drawn Easter games. £1

Finish 1:15pm



## Easter Club with Neo and SATs club

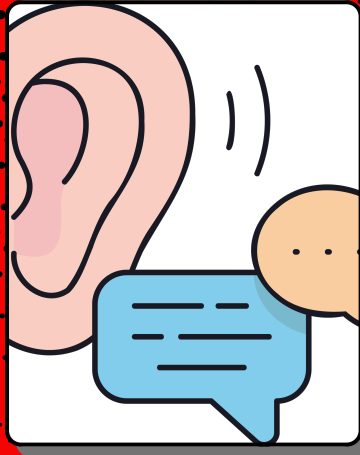
Neo Community Centre and putting on a free Easter Club for children aged 8-11 at Well Lane. Monday 30<sup>th</sup> March - Thursday 2<sup>nd</sup> April from 10-2pm. If you'd like to book your child on, please follow the link. Any issues, ask Mrs Ormond. Limited spaces.

<https://eequ.org/book/well-lane-2026-neo-easter-half-term-with-neo-community-25645>

Y6 SATs Easter club is on for all pupils in Y6 only on Monday 30<sup>th</sup> and Tuesday 31<sup>st</sup> March 9:15- 2pm at school.

# YOU SAID, WE DID!

## STAR AND A WISH



### Parental Feedback

Thank you for attending parents evening; it was lovely to see so many of you. Our pupil leadership team surveyed parents about their thoughts on school. We asked you to give us a star and a wish. This is a summary of what you said and what we did.

## WHAT IS GOING WELL

### Teaching and Learning

You are happy with the quality of the curriculum, teaching and learning and feel staff are caring and support children well.



### SEN and Pastoral support

You feel pupils with SEN or emotional difficulties are supported well by staff and that school is inclusive.



### Enrichment

You are pleased that we offer lots of clubs, trips and special days such as World Book Day, Halloween and discos.



## WHAT YOU WOULD LIKE MORE OF:

### BETTER COMMUNICATION

We will post daily reminders of upcoming events on DOJO and Instagram and a weekly overview. Please join our Instagram where all key messages are repeated as well as lots of lovely pictures from the classes.

### MORE ENRICHMENT

We are planning on introducing a residential (overnight) trip three times during the year. We will give you plenty of notice and spread payments throughout the year. More details next term.



# Attendance

**Regular school attendance is the foundation of  
your child's success!**

**10 minutes late every day = 6.5 school days lost!**

**15 minutes late every day = 10 school days lost!**

**1 day a week absent = 2 months of school lost a  
year!**

**2 weeks absence is over 50 hours of teaching !**

*This week's winning class for best attendance is...*



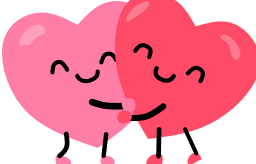


**The school gates open at 8:45 am and our register closes  
at 8:55am!**

**All children with 100% attendance this term will be  
entered into a special raffle to win some fantastic prizes!**

# The Heart Events



| Day and time                 | Theme   | Group   |
|------------------------------|---|---|
| Every Wednesday<br>2-3pm     |   | <b>Parent and Toddler group</b><br>A group for our parents and their babies and toddlers (0-4 yrs) run by our very own Miss Hayes. Play, sing, snack, stories and meet new friends! |
| Every Wednesday<br>3:15-4:15 |  | <b>Ready Steady Cook</b><br>Neo is here to run a 5 week family cooking class. Free for up to 8 families. Ask on the gate/office   |
| Every Friday<br>9-10am       |  | <b>Heart to Heart- Community cafe</b><br>Come and have a cuppa, a panini and a chat with Mrs Ormond. Community shop; pay as you feel.   |





# Well Lane's Easter

# Egg-stravaganza

**23RD - 27TH MARCH**

## MONDAY

Bring in a decorated boiled egg for our Easter egg competition.

## TUESDAY

Rock Steady Easter concert.

## WEDNESDAY

Easter egg competition winners announced.

## THURSDAY

Easter Celebration assembly and raffle winners announced.

**RAFFLE**



## FRIDAY

Easter fun day.  
Own clothes.  
Scavenger hunt,  
Easter crafts,  
party games. £1.

School closes for the Easter holidays on Friday 27th March at 1:15.  
All children return to school on Monday 6<sup>th</sup> April 8:45am.

# HEART HEART

Come along for a heart2heart chat every  
Friday 9-10am with Mrs Ormond.  
Our community cafe is now open!

